

DYNAMICA 37

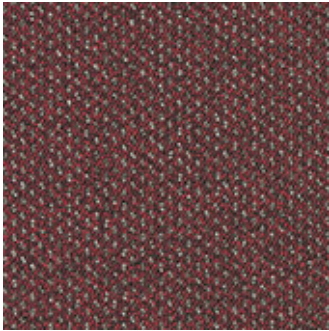


Produkt-Eigenschaften

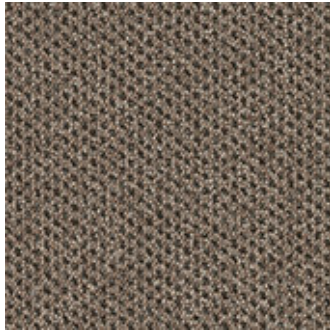
Breite (m)	4.00/5.00	Rücken	Flextex Plus Textilrücken
Textur	Schlinge	Polmaterial	Solution Dyed Nylon (SDN)
Aspekt	Gemustert/Dessin	Musterwiederholung L*B (cm)	
Wohnbereich	-	Objektbereich	stark: Hotelzimmer, Hotelsuite, Verkaufsraum, Restaurant, Konferenzraum, Büro, Treppe, Rezeption, Eingang
(*)wenn Treppen Symbol angezeigt ist			
Polhöhe (mm)	2.8	Gesamtdicke (mm)	6.1
Budget	€€€		



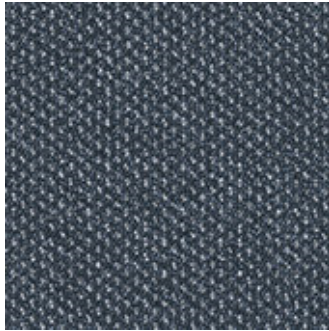
verfügbare Farben



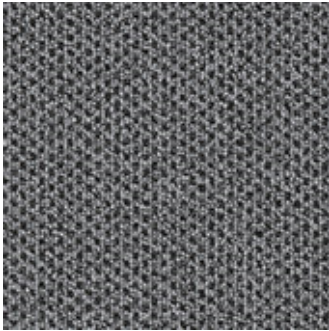
DYNAMICA 12



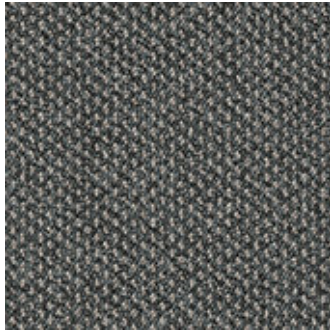
DYNAMICA 37



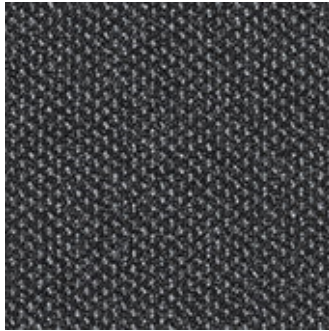
DYNAMICA 78



DYNAMICA 90



DYNAMICA 97



DYNAMICA 98