

This website will disappear soon. Visit our new corporate website at www.associated-weavers.com for the latest information and updates.

Don't forget to update your bookmarks!

LOUNGE 17



Product properties

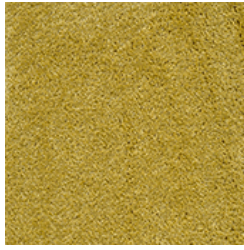
Widths (m)	4.00/5.00	Backing	FusionBac
Texture	Saxony	Pile composition	100% Polyamide (Nylon)
Aspect	Plain color/speckled	Pattern repeating every L*W (cm)	
Domestic Use (*) if stairs symbol is present	intensive : bedroom, guest room, living, dining, hobby, office, study, entrance, hallway and stairs *	Commercial Use	General: Hotel room, Hotel suite, Boutique, Shop, Restaurant, Conference room, Office, Stairs
Pile height (mm)	11.0	Total thickness (mm)	13.5
Budget	€€€€		



Available colors



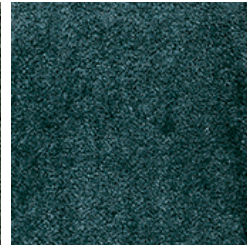
LOUNGE 48



LOUNGE 54



LOUNGE 24



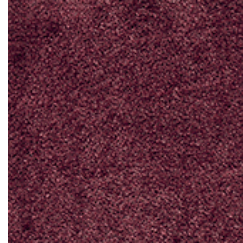
LOUNGE 28



LOUNGE 78



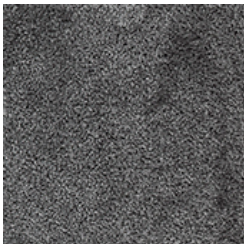
LOUNGE 17



LOUNGE 19



LOUNGE 44



LOUNGE 99



LOUNGE 95



LOUNGE 90



LOUNGE 05



LOUNGE 34



LOUNGE 49



LOUNGE 45



LOUNGE 65

AWE -IZ "Klein Frankrijk", Weverijstraat 1 - 9600 Ronse Belgium - Tel + 32 55 23 02 11 -

www.carpetyourlife.com

The Associated Weavers Company reserves the right to modify the characteristics of products while keeping the same technical properties. We strongly recommend the use of darker colours for heavy traffic areas. - This document may contain typographical errors. The product images used are a general guide and, in reality, the colours may deviate slightly due to limitations of the printing process used.